

# State of British Columbia's Coastal Rainforest

## Vancouver Island & South Coast

Vancouver  
Island

South  
Coast

Vancouver

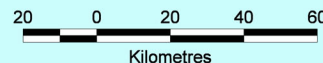
### High and Medium Productivity Forest Ecosystems at Risk of Species Loss

Ecosystems with < 30 % Old Forest  
(High Risk of Species Loss)

Ecosystems with between  
30% and 70% Old Forest

Ecosystems with > 70% Old Forest

Urban or Agricultural



Scale 1:635,000 Projection: Albers  
Sierra Club British Columbia, 2009



SIERRA  
CLUB  
BC

Ecosystem assessment of the 4 regions shown is based  
on Biogeoclimatic Subzone Variant by Site Quality.

Productivity for 16% of the forest shown in this map  
is unknown. However most of these areas are in the  
highly productive Douglas fir region of Vancouver  
Island and therefore are included in this map.