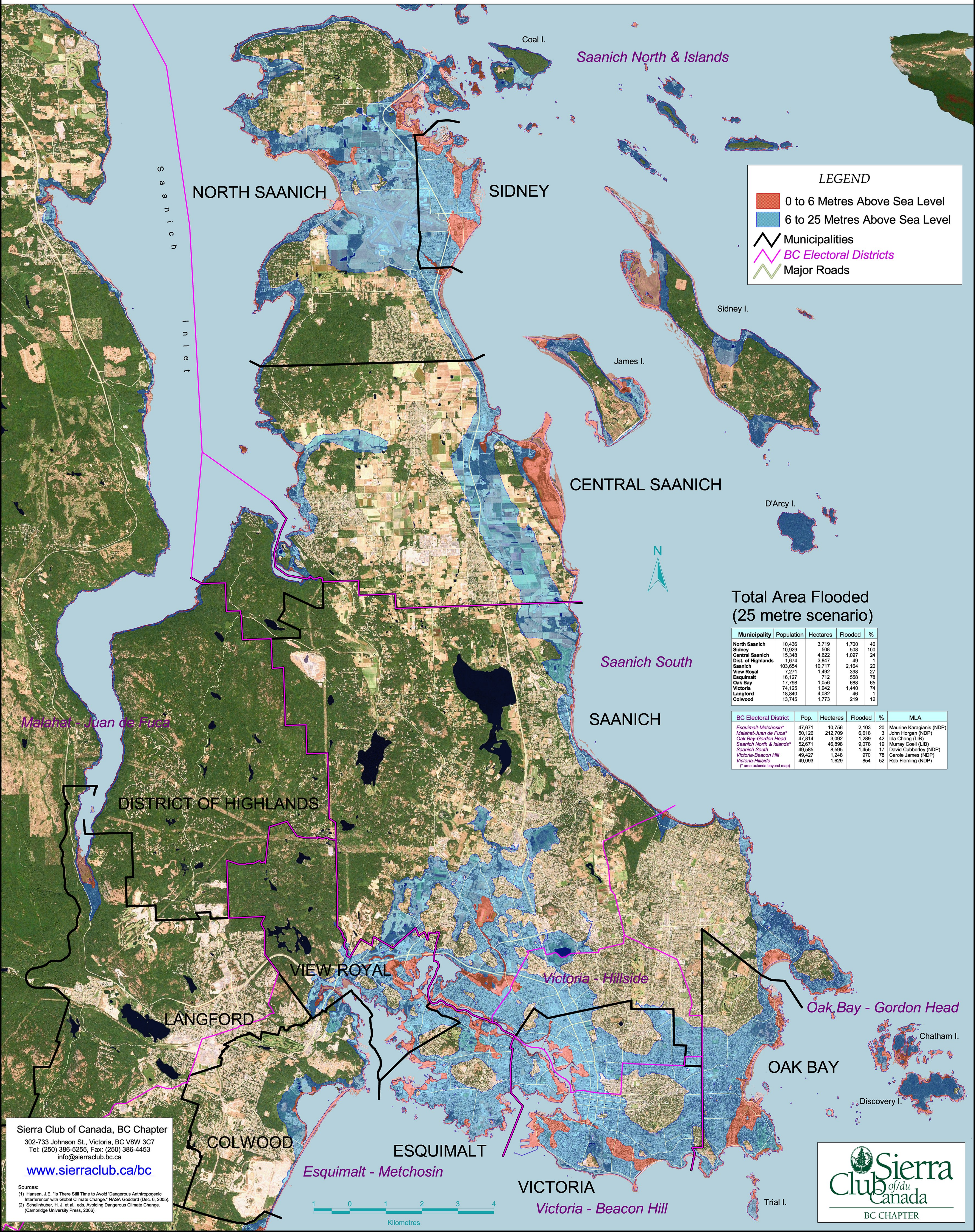


Is BC's Capital Going Under?

Global warming has already triggered a rise in sea levels that could reach between 6 and 25 metres.¹
 We have 20 years to reduce carbon emissions or climate change will become irreversible.²



LEGEND

- 0 to 6 Metres Above Sea Level
- 6 to 25 Metres Above Sea Level
- Municipalities
- BC Electoral Districts
- Major Roads

Total Area Flooded (25 metre scenario)

Municipality	Population	Hectares	Flooded	%
North Saanich	10,436	3,719	1,700	46
Sidney	10,929	508	508	100
Central Saanich	15,348	4,622	1,097	24
Dist. of Highlands	1,674	3,347	49	1
Saanich	103,654	10,717	2,164	20
View Royal	7,271	1,492	398	27
Esquimalt	16,127	712	558	78
Oak Bay	17,799	1,056	698	65
Victoria	74,125	1,942	1,440	74
Langford	18,840	4,082	46	1
Colwood	13,745	1,773	219	12

BC Electoral District	Pop.	Hectares	Flooded	%	MLA
Esquimalt-Metchosin*	47,671	10,756	2,103	20	Maurine Karagianis (NDP)
Malahat-Juan de Fuca	50,126	212,709	6,618	3	John Horgan (NDP)
Oak Bay-Gordon Head	47,614	3,092	1,289	42	Ida Chong (LIB)
Saanich North & Islands*	52,671	46,898	9,078	19	Murray Coell (LIB)
Saanich South	49,585	8,595	1,455	17	David Cubberley (NDP)
Victoria-Beacon Hill	49,427	1,248	970	78	Carole James (NDP)
Victoria-Hillside	49,093	1,629	654	52	Rob Fleming (NDP)

(* area extends beyond map)

Sierra Club of Canada, BC Chapter
 302-733 Johnson St., Victoria, BC V8W 3C7
 Tel: (250) 386-5255, Fax: (250) 386-4453
 info@sierraclub.bc.ca
www.sierraclub.ca/bc

Sources:
 (1) Hansen, J.E. "Is There Still Time to Avoid 'Dangerous Anthropogenic Interference' with Global Climate Change." NASA Goddard (Dec. 6, 2005).
 (2) Schellnhuber, H. J. et al., eds. *Avoiding Dangerous Climate Change*. (Cambridge University Press, 2006).

